



# Audemat Control Silver

## Remote Control & Facility Management

The Audemat Control Silver (formerly known as Mini Control Silver) is a DIN Rail mountable system for site management and monitoring. In one compact box, it delivers all the key elements for efficient site management: automation, fault notifications, telecommunications and graphic overview.

It can be configured to connect with any equipment at a site through traditional status and metering inputs and commands (relays). The Audemat Control Silver is also capable of advanced connections to other equipment using serial protocols or SNMP via an IP network. Using the ScriptEasy software suite, configuration of the Audemat Control Silver is quick and easy.

### Benefits



#### Powerful Performance

- Powered by ScriptEasy, the smartest graphical tool for remote control
- Monitoring and Alarm Control of equipment installed at remote sites
- Enables automatic actions to be triggered on defined events, statuses or combination of these



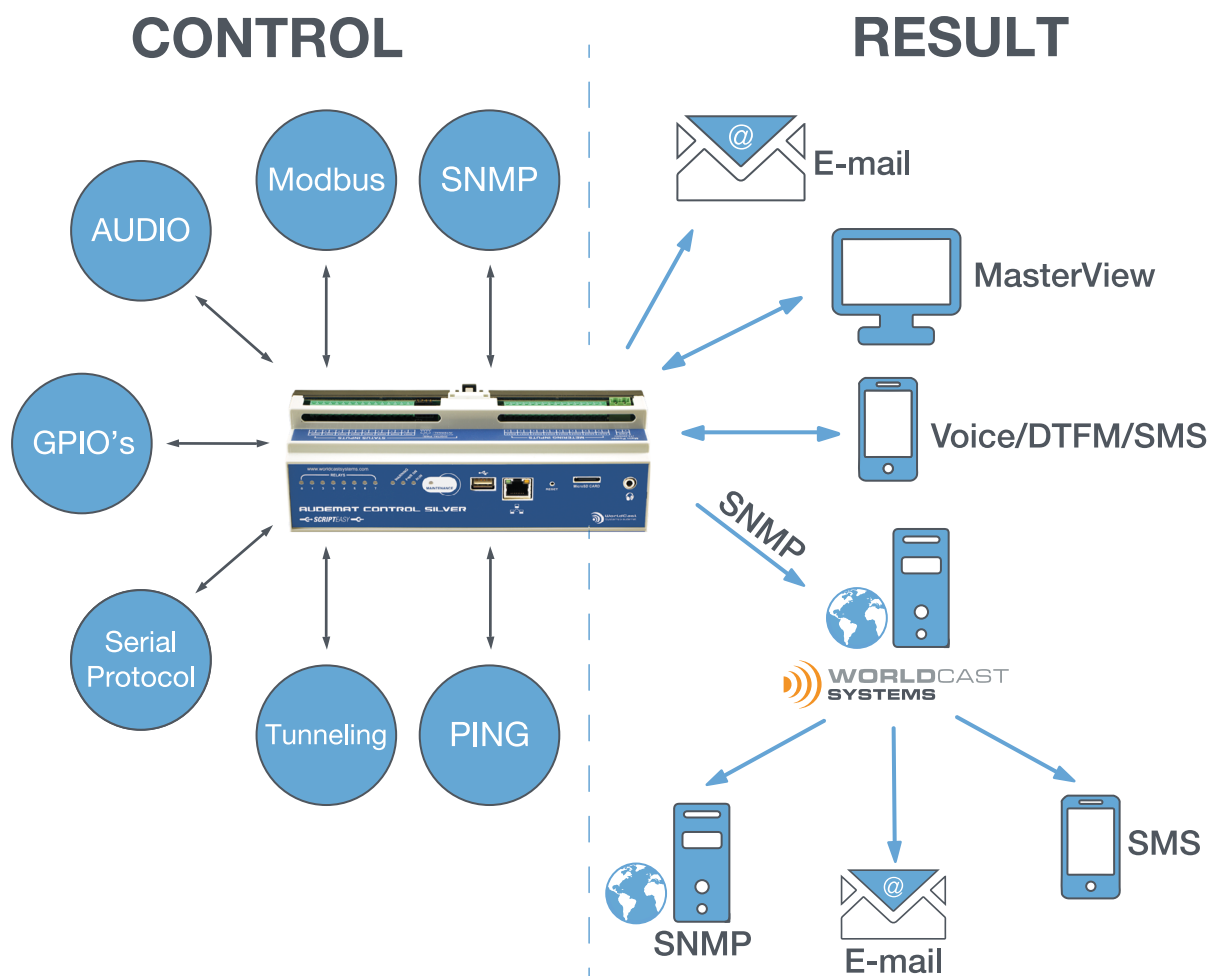
#### Powerful Control

- Flexible and customizable alarms and notifications
- Access the site from anywhere via an embedded web server
- MasterView enables creation of customized views for easy understanding



#### Powerful Savings

- 24/7 vigilance and action to protect your investment
- Compact and light, the Audemat Control Silver can fit anywhere (DIN rail mountable)
- Audio presence detection and backup for transmitter sites prevents off-air disasters



### Connect to external equipment for data access

- Via hard wired inputs / outputs (relays, audio inputs, analog or digital inputs):  
Status, metering data, commands and automatic actions
- Via USB<->RS232 or USB<->RS485 adapter:  
IP Tunnelling for remote access to the terminal interface of external equipment  
SCRIPTEASY Driver: integration of specific serial protocols for automatic monitoring
- Via Ethernet ports:  
Management of external equipment via SNMP

### Remote diagnostic, monitoring, maintenance

- Continuous monitoring and logging of status, values or levels
- Triggering of automatic actions on out of tolerance conditions or on set schedules
- Notifications on occurrence of specific conditions

### Transmitter management

- Detection of failure and control of backup transmitters
- Double drive managements
- Triggering of automatic or manual actions using inputs / outputs and script from ScriptEasy

### Audio backup

- Audio backup managed with ScriptEasy script to provide failover option upon loss of audio at the transmitter site



The Audemat Control Silver is a remote control and data acquisition system designed to allow local and remote monitoring and control of all types of equipment. In one compact box, it delivers all the key elements for efficient site management: automation, fault notifications, telecommunications and graphic overview.

Using the ScriptEasy software suite, configuration is quick and easy. Combining WorldCast Systems' knowledge and experience with the advanced functions and capabilities of the unit (RS232/485 drivers, Audio Backup, ModBus, Scripting, SNMP management) enables us to offer a turnkey solution to exactly meet your site's requirements.

## Audemat Control Silver | Features

- HTTP or HTTPS secured access for views and commands
- User rights management allowing access in admin, guest or maintenance mode
- Maintenance mode to avoid alarms during technician operations
- ScriptEasy software for configuration and remote administration
- MasterView (web pages or application) for customized end-user views of data and control
- Notifications via Email, SNMP and optionally SMS and Voice/DTMF Phone Alert calls
- Monitoring of up to 2 SNMP third party devices by default (12 as an option)

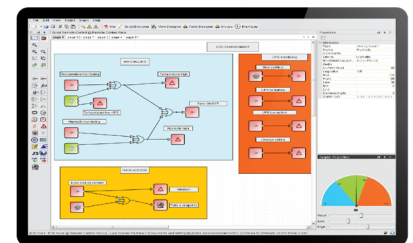
## Audemat Control Silver | Scripting

- Graphical script and view(s) creation with drag and drop method
- Logic gates, mathematical functions, timers, schedulers, pulses, counters, cycles, ping, push and press buttons
- Drawing tools and comments to help organize the script
- Drawing tools, text and image insertions to help create user-friendly customized view(s)
- Advanced functions: tunneling, SNMP commands (SET, GET, GETBULK), SNMP trap reception
- Drivers and API (Application Protocol Interface) allowing management of specific dialogs with third party devices via serial connection (optional RS232 or RS485 adapter)
- Script operations can be simulated locally, modified, saved and restored or copied from one unit to another



## Advanced Telemetry & Facility Management

ScriptEasy is a revolutionary facility control software for connected devices, enabling the automatic correction of any critical errors that may occur. Across its intuitive web interface, ScriptEasy includes management of serial communications, SNMP, logic operators, live user inputs, timers, and more. This enables the "scripting" of site operations for evaluating multiple parameters and automatically engaging backup systems, while simultaneously alerting relevant technical personnel. **Integrated in the APT IP SILVER, ScriptEasy is the core technology that provides the device with its inherent "intelligence".**



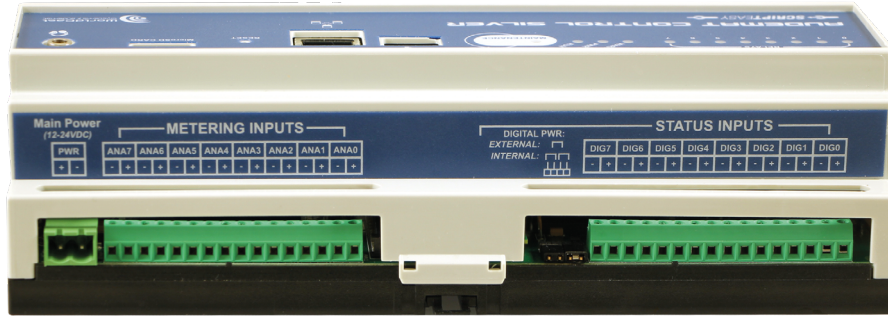
ScriptEasy

## MasterView

With MasterView you can display data and control equipment in multiple custom views. Each view can contain as much information from the remote site as desired. MasterView is also available as a web application. Views are created using a standard web browser and viewed from any PC or mobile device.



MasterView  
Remote Customised view(s)



Type of interfaces	Number
Metering (analog inputs)	8
Status (digital inputs)	8
Commands (relay outputs)	8
Audio output	1 (stereo)
Audio Input	2
PT100 input	1
CAN bus	1
LAN port	1 (100 Mb/s)
USB port	1
microSD card	1 (2 Gb)
LED indicators	4 + relays
TCP-IP Protocol	SMTP, HTTP, FTP, SNMP, NTP, PPP...
Headphone jack (3.5 mm)	1
I/O Specification	
Metering (analog inputs)	12-bit -50 V/+50 V (4 ranges)
Status (digital inputs)	5-25 VDC external or closure contact
Commands (relay outputs)	1A @ 50VDC per relay - SPDT
Technical characteristics	
Processor	400 MHz, 32 bits
RAM	128 Mb

Physical specification	
External Dimensions	210 x 90 x 60 mm (Din rail format)
Weight	~ 300 g
Main Power Supply	12-24 V external (option)
Power Consumption	< 10 W (5 W typical)
Operating Temperatures	0°C to +60° C
Storage Temperatures	-20°C to +70° C
Fuse	Resettable fuse PTC
Humidity	10-95% non-condensing relative humidity

Technical specifications are subject to change without prior notice - On project, WorldCast Systems may offer distinct specifications. Specifications on the offer prevail those in this document.

## Order information

STANDARD VERSION	
REF	DESCRIPTION
TF00350-D0	Audemat Control Silver (AC Power adapter as option)
OPTION	
TF00165-C0	Phone Alert Option incl. Voice modem

### Headquarters

20 avenue Neil Armstrong  
33700 Mérignac (Bordeaux) FRANCE  
+33 (0)5 57 928 928

### US Subsidiary

19595 NE 10<sup>th</sup> Avenue Suite A  
Miami, FL 33179 USA  
+1 305 249 3110

